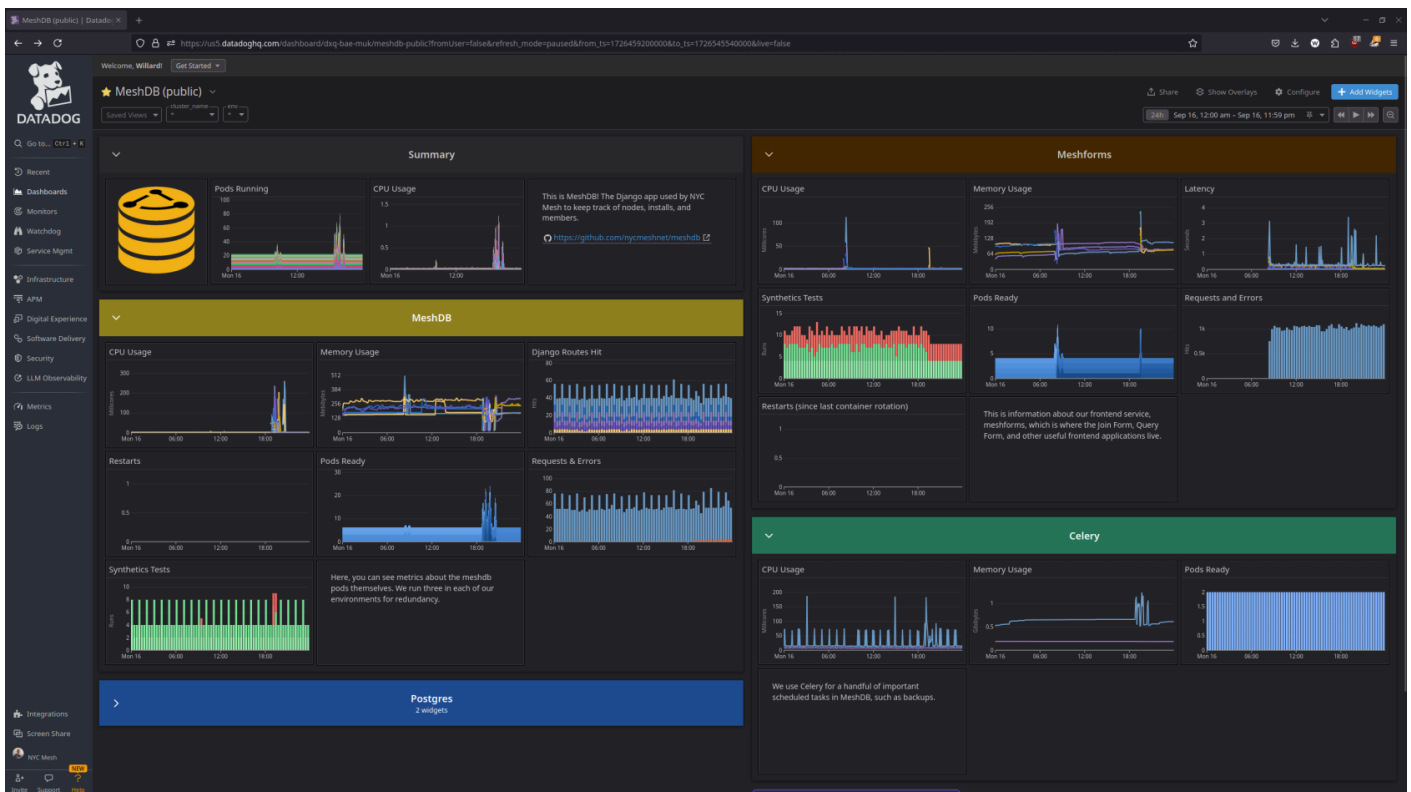


# Observability

We use Datadog to monitor MeshDB.

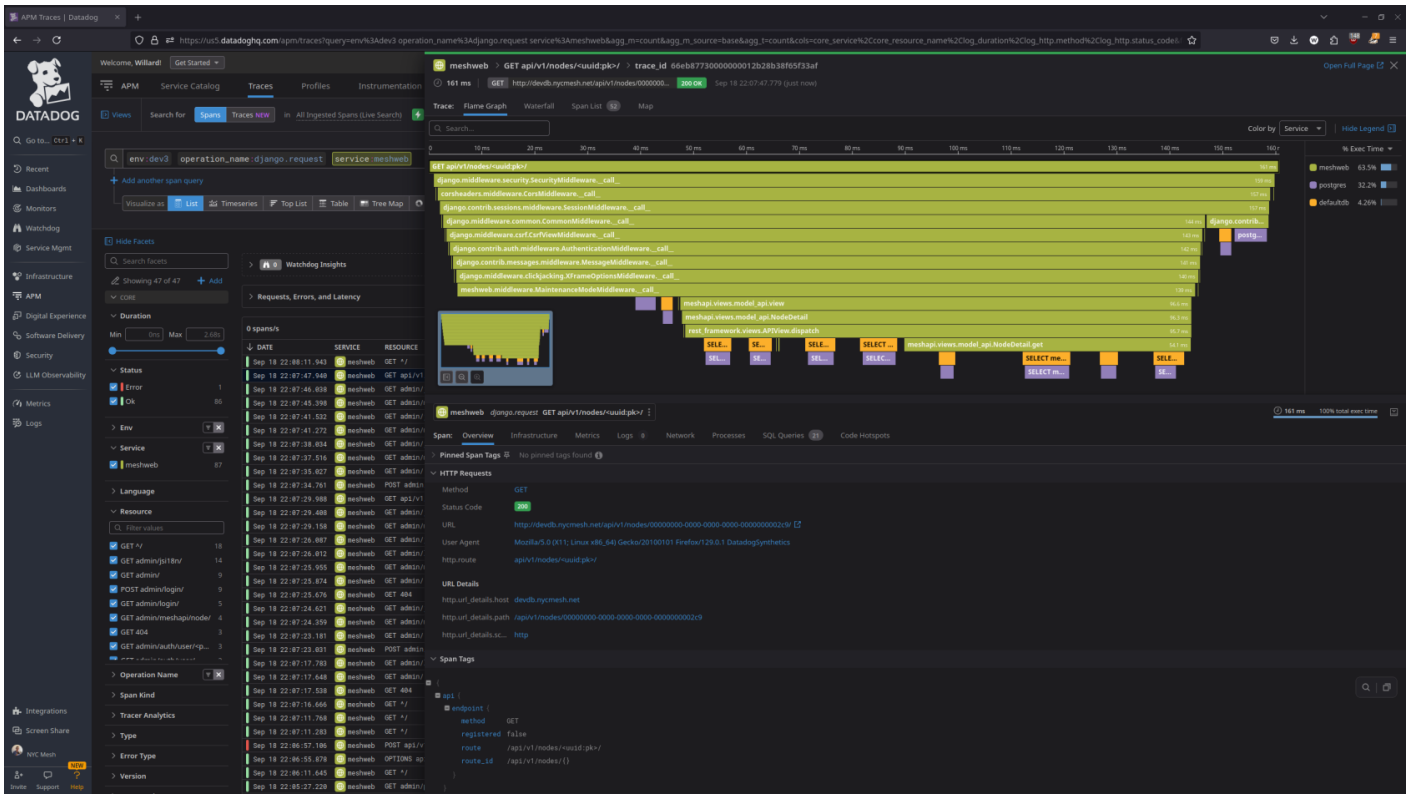
## Dashboard

<https://p.us5.datadoghq.com/sb/4614e554-06a1-11ef-b43a-da7ad0900005-ba514715f9683f103794ee705df1db95>



## APM & Tracing

Presently, MeshDB is instrumented at the deployment level with [Single Step APM](#). Meshforms is instrumented from the datadogagent itself using the enabledNamespaces feature.



Revision #5

Created 16 September 2024 12:24:10 by Willard Nilges

Updated 19 September 2024 03:36:12 by Willard Nilges